



Overview
Houseplan 1.0





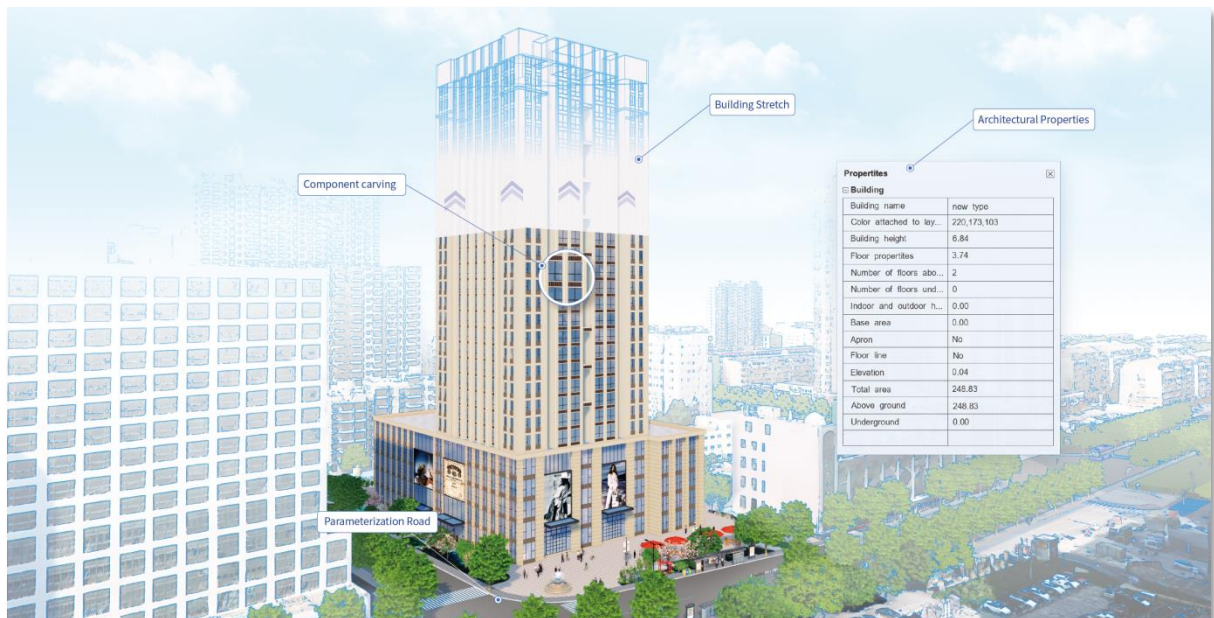
Houseplan 1.0 Overview

Make stunning 3D scheme with speed and ease

Houseplan 1.0 is an intuitive and versatile 3D modeling and real-time rendering software that offers a lightweight yet powerful solution for visualizing and presenting your design schemes. With easy-to-learn tools and multiple modeling methods, you can quickly create 3D models, edit designs in real-time, and customize your presentation with various texture resources. Houseplan 1.0 is also compatible with other major 3D formats, making it the perfect choice for urban planners, landscape designers, architects, and hobbyists. Whether you are a beginner or an expert, Houseplan 1.0's user-friendly interface and extensive 3D model and texture resources provide great functionality and design results at an affordable price.

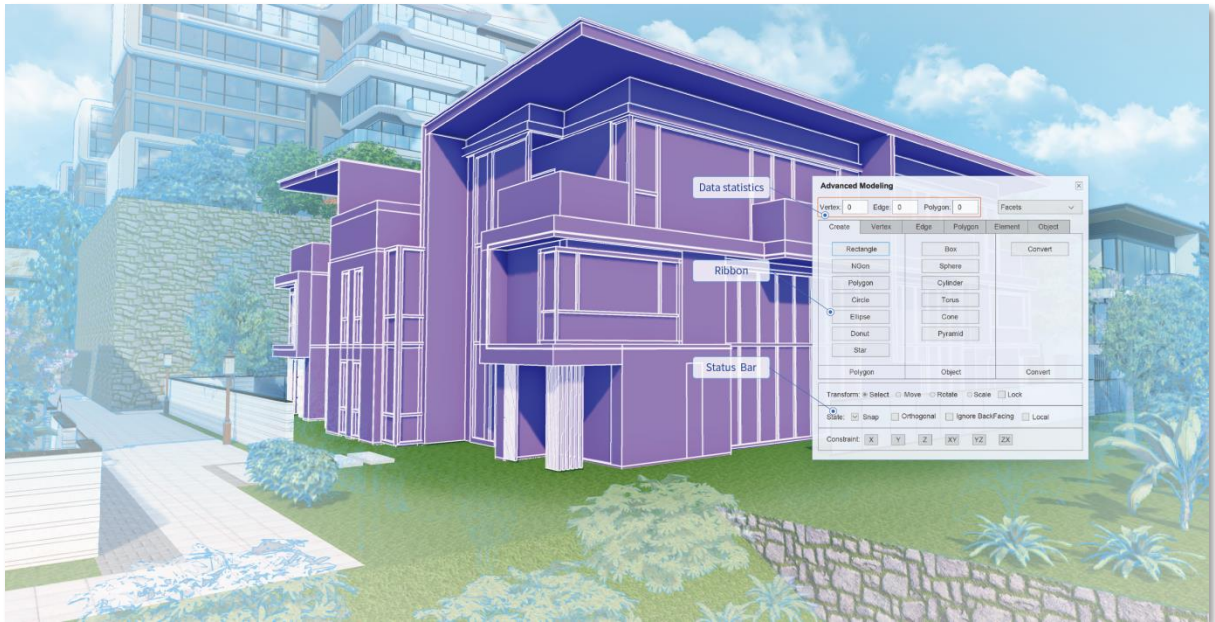
Quick Modeling

Houseplan 1.0 offers the most efficient 3D modeling for building planning, helping you complete your scheme design quickly and easily with just a few clicks.



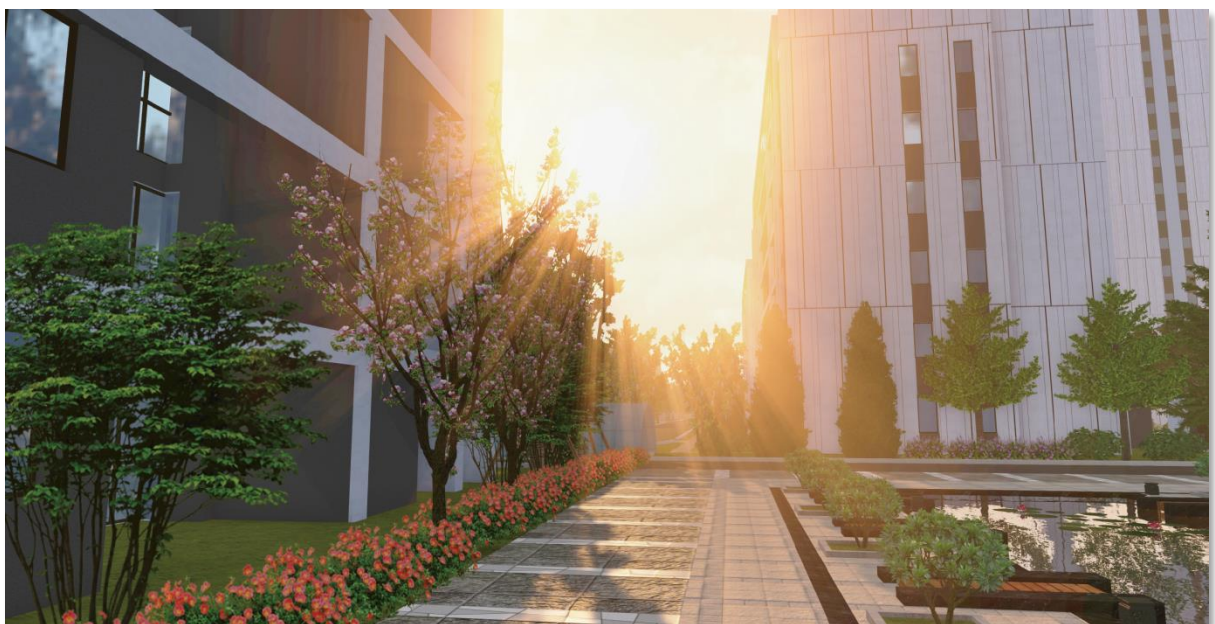
Advanced Modeling

Houseplan 1.0 offers advanced 3D modeling tools to satisfy diverse and complicated modeling requirements. It's simpler, lighter, and easier to use than other large and complex software on the market.



Real-time Rendering

Houseplan 1.0 uses a high-performance rendering engine to sync 3D model editing with simulations, providing interactive and responsive environments that display rendered results instantly.



Format Compatibility

With Houseplan 1.0, you can easily import DWG drawings and directly extrude them. Additionally, it supports importing of oblique photography and point cloud data, as well as various other file formats.



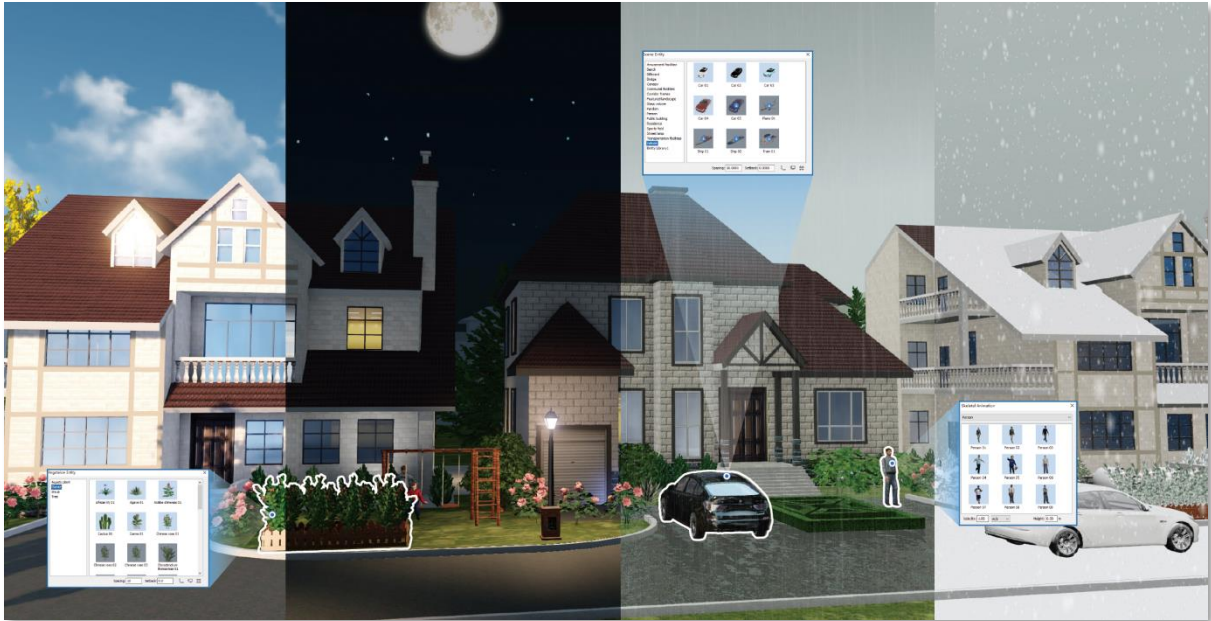
Material Painting

With Houseplan 1.0, you can not only gain the power to effortlessly apply and fine-tune materials, but also seamlessly import a diverse array of materials from a wide range of sources, whether you're handling them individually or in bulk.



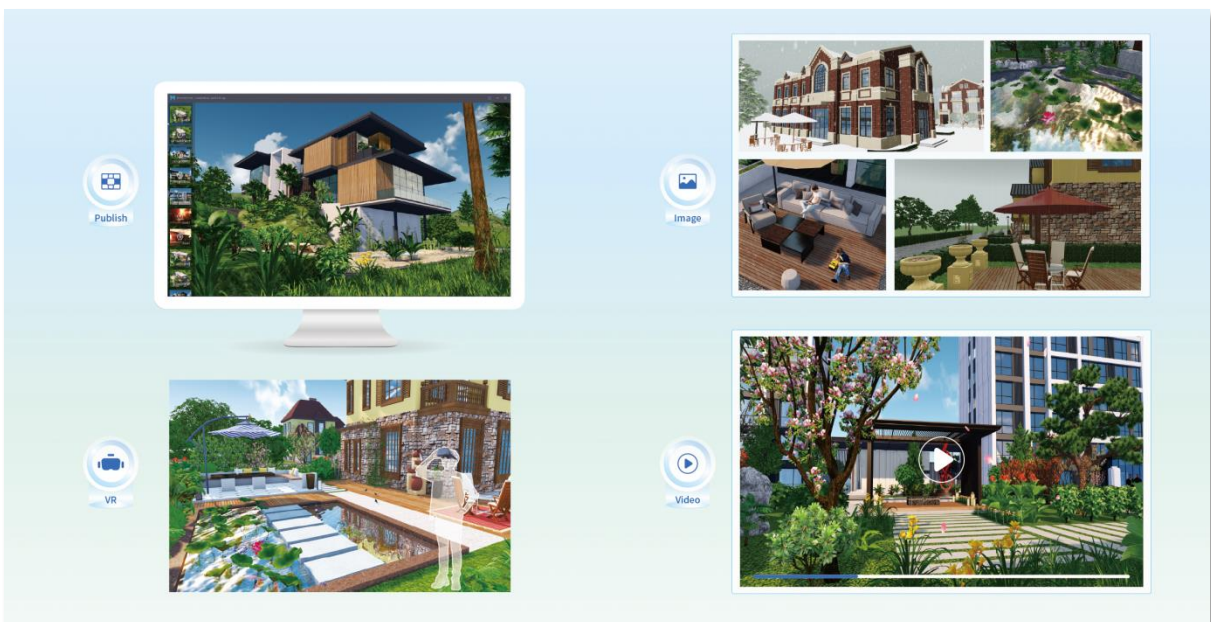
Entities and Animation

Houseplan 1.0 enables convenient addition of water, vegetation, terrain, and other scene elements, and provides the ability to exchange realistic weather environments. Moreover, you can easily add animation entities and set their movements.



Output

Houseplan 1.0 offers tools for specifying camera points and video paths, enabling users to export images and videos. Furthermore, users can publish their designs as a .exe file that can be operated independently for viewing images and videos, drawing new video paths, displaying properties, and switching weather environments.





Houseplan 1.0



■ www.gstarcad.net/houseplan/